

The Radio Show

Name:

Date:



An expert reports

Listen to the beginning of a radio show in which an expert reports on her area of specialization.



Audio Content

To listen to audio content just scan the QR code and listen to it on the digital worksheet.

<https://to-teach.ai/worksheet/nNpwrRgrE5K2ZFgOEIGN>



Audio Content

To listen to audio content just scan the QR code and listen to it on the digital worksheet.

<https://to-teach.ai/worksheet/nNpwrRgrE5K2ZFgOEIGN>



Audio Content

To listen to audio content just scan the QR code and listen to it on the digital worksheet.

<https://to-teach.ai/worksheet/nNpwrRgrE5K2ZFgOEIGN>



Audio Content

To listen to audio content just scan the QR code and listen to it on the digital worksheet.

<https://to-teach.ai/worksheet/nNpwrRgrE5K2ZFgOEIGN>

Your questions

Which questions would you like to ask the expert?

The Radio Show

Name:

Date:



The second part of the radio show

Listen to how the program continues and what questions some listeners have asked.



Audio Content

To listen to audio content just scan the QR code and listen to it on the digital worksheet.

<https://to-teach.ai/worksheet/nNpwwRgrE5K2ZFgOEIGN>



Audio Content

To listen to audio content just scan the QR code and listen to it on the digital worksheet.

<https://to-teach.ai/worksheet/nNpwwRgrE5K2ZFgOEIGN>



Audio Content

To listen to audio content just scan the QR code and listen to it on the digital worksheet.

<https://to-teach.ai/worksheet/nNpwwRgrE5K2ZFgOEIGN>

For each statement, decide if it's true or false.

Traditionally, ice hockey was dominated by what coaches and scouts could see with their eyes.

☐ True ☐ False

Analytics have made it unnecessary to consider a player's physical attributes.

☐ True ☐ False

Teams use analytics to optimize scoring chances by analyzing shot locations and types.

☐ True ☐ False

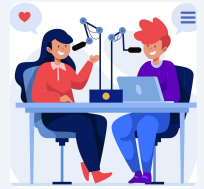
Advanced analytics have no impact on player development and scouting.

☐ True ☐ False

The Radio Show

Name:

Date:



Audio Content

To listen to audio content just scan the QR code and listen to it on the digital worksheet.

<https://to-teach.ai/worksheet/nNpwrRgrE5K2ZFgOEIGN>



Audio Content

To listen to audio content just scan the QR code and listen to it on the digital worksheet.

<https://to-teach.ai/worksheet/nNpwrRgrE5K2ZFgOEIGN>

Choose the correct answer for each question.

What is one of the main reasons modern helmets have made ice hockey safer?

- ☐ They are more colorful ☐ They are lighter in weight
☐ They have better impact absorption materials ☐ They include built-in communication devices

How has the enforcement of rules contributed to player safety in ice hockey?

- ☐ By introducing more breaks during the game ☐ By increasing the length of the games
☐ By cracking down on dangerous plays ☐ By allowing more physical contact

Why is player education and training important for injury prevention in ice hockey?

- ☐ It allows players to use more advanced equipment
☐ It helps players learn injury prevention strategies ☐ It teaches players new game rules
☐ It makes players faster on the ice

What role does video analysis play in enhancing player safety in ice hockey?

- ☐ It assists in making game strategies ☐ It records players' personal achievements
☐ It helps in studying players' movements to identify risky patterns
☐ It is primarily used for entertainment purposes

What is a significant benefit of the comprehensive concussion protocols in ice hockey?

- ☐ They let players self-diagnose their injuries
- ☐ They allow players to play without helmets
- ☐ They ensure players fully recover before returning to play
- ☐ They shorten the recovery time for players

How do advancements in padding and protective gear benefit ice hockey players?

- ☐ They are more aesthetically pleasing
- ☐ They minimize the impact of collisions and falls
- ☐ They are cheaper than older gear
- ☐ They make players run faster

Why is the introduction of stricter penalties for dangerous plays important?

- ☐ It discourages reckless behavior on the ice
- ☐ It allows for more commercial breaks
- ☐ It increases the number of players on the ice
- ☐ It makes the games shorter

What is the primary focus of sports scientists and medical professionals working with ice hockey teams?

- ☐ Organizing team events
- ☐ Improving the design of hockey sticks
- ☐ Enhancing player resilience and preventing injuries
- ☐ Creating new game rules



Audio Content

To listen to audio content just scan the QR code and listen to it on the digital worksheet.

<https://to-teach.ai/worksheet/nNpwwRgrE5K2ZFgOEIGN>

